

The Green City Action Plans of Adelaide, South Australia

February 2010

Debra Just

General Manager City Strategy & Design,
Adelaide City Council

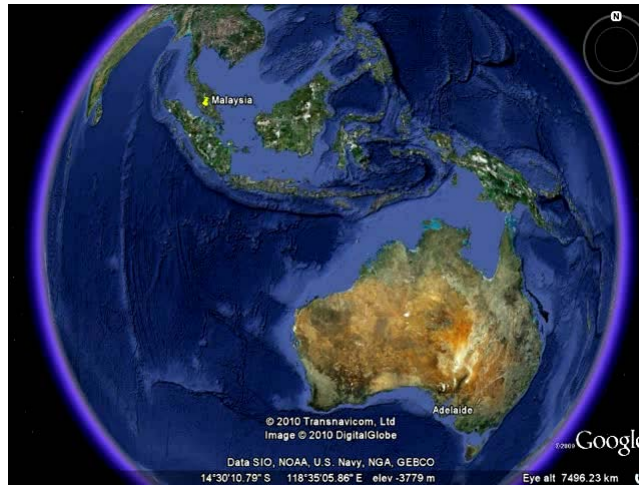
www.adelaidecitycouncil.com



Outline

- **Adelaide's Context**
- **Change in focus over time**
Environment → Climate Change → Integrated land use planning
- **Case studies:**
 - Progress
 - Monitoring
 - Partners





Greater Adelaide Challenges

- **Population growth** (inc. birth rates and migration)
 - 2006 = 1.29m
 - 2036 = 1.85m
- **Ageing population**
 - 110% increase in > 65 years
 - 220% increase in > 85 years
- **Smaller households**
 - lone person households 33% in 2036
 - today 420 homes/1000 persons
 - 2036 435 homes/1000 persons
- **Healthy lifestyles** - increase in obesity, ageing
- **Housing affordability**

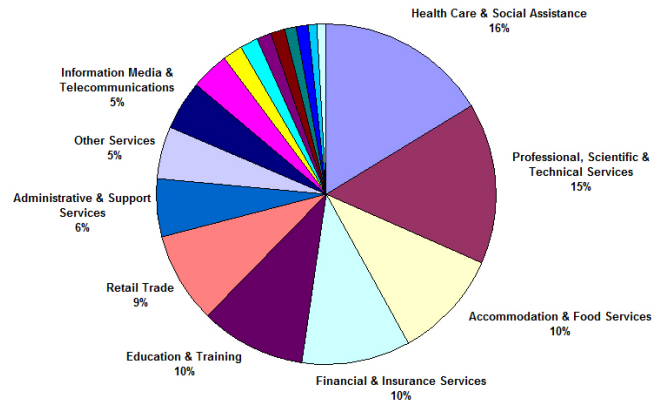
Greater Adelaide Challenges (cont.)

- **Maintaining strong economic growth**
 - Defence, manufacturing, services, ICT, primary production, mining, **green industries**
 - Transport and infrastructure
- **Climate Change**
 - Emissions, Energy
 - Water
 - Biodiversity



Central Adelaide

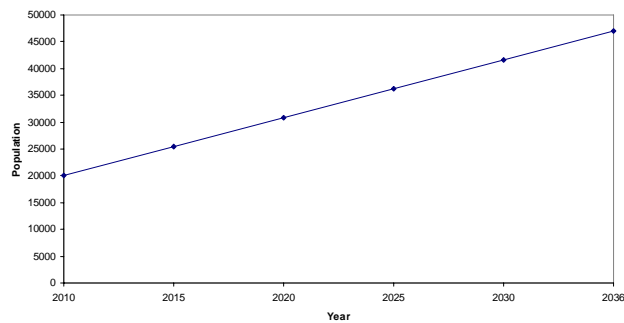
Employment by Industries for City of Adelaide



Source: Land use and Employment Survey 2008

Central Adelaide

Population Projection of Adelaide City



Population:

- 20,000 (2010) → 47,000 (2036)

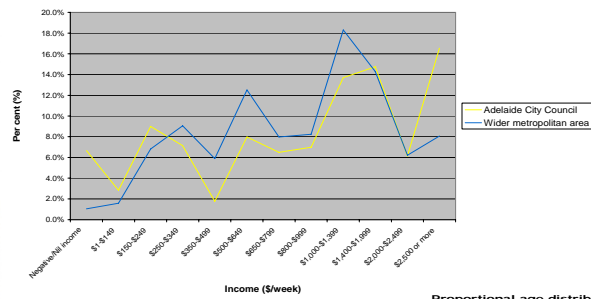
Area:

- 15.57km² (of which 50% are parkland)

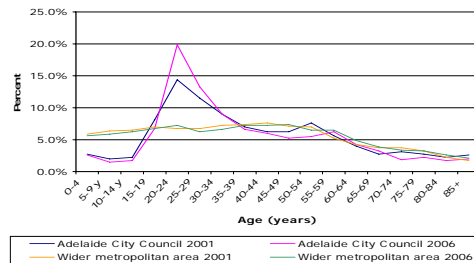
Source: Adelaide City Council 2010

Central Adelaide

Proportion of households in each income range (a)



Proportional age distribution 2001 and 2006



Source: 2006 Census data in Adelaide City Council Affordable Housing Policy Background Paper



Adelaide: Summary of Green Plans

1. Environment:

Environmental Sustainability Strategy (2009-2012) (ESS)

2. Climate Change:

Carbon Neutral Council Action Plan (2008-2012)

Adelaide Green City Sector Agreement (2010-2012)

3. Integrated Planning:

Strategic Plan for City of Adelaide (2008-2012)

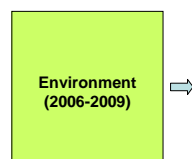
30 Year Plan for Greater Adelaide (2010 - 2036)

Integrated Design Strategy and

Integrated Design Commission (proposed)



Adelaide: Development of Green Plans

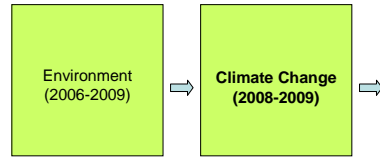


Environment

- **Focus on ecological systems**

- water
- biodiversity
- waste
- climate change

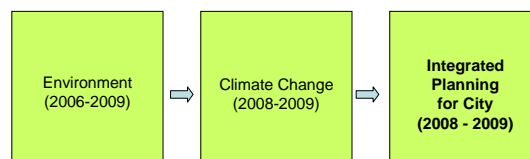
Adelaide: Development of Green Plans



Climate Change

- **Focus on impact on humans and security**
(global focus on health, food and on export crops, sea levels, extreme weather events, economies, border security)
- **Local Adelaide focus on emissions and energy reduction**
(within the Council's operations; commercial buildings and transport)

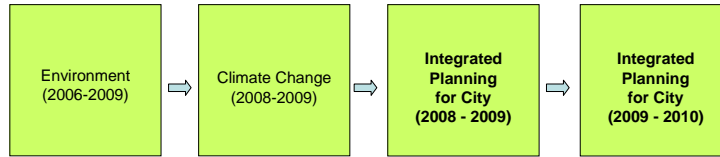
Adelaide: Development of Green Plans



Integrated Planning for City (2008 ----)

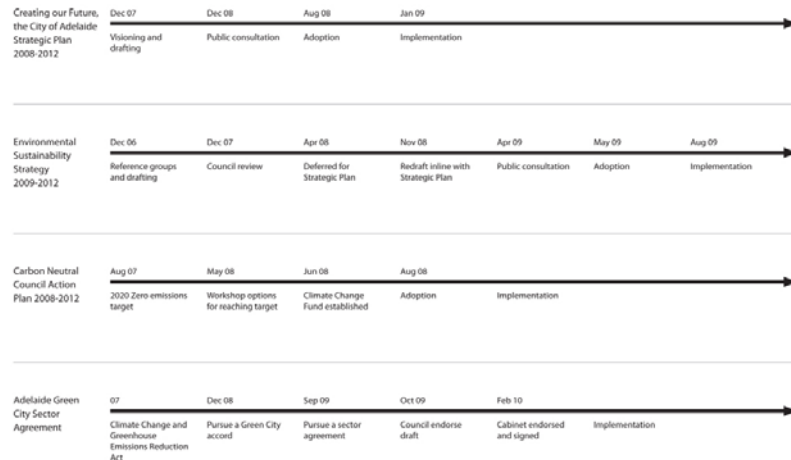
- **Focus on the capacity of settlements (Cities)**
re: population growth, climate change, social, economic & ecological systems

Adelaide: Development of Green Plans



Integrated Planning for City (2008 ----)

- **Focus on the capacity of settlements (Cities)**
re: population growth, climate change, social, economic & ecological systems



Adelaide: Green Plans 'evolution' summary

1. **Environment** (ecological systems)



2. **Climate Change** (impact on humans and security)

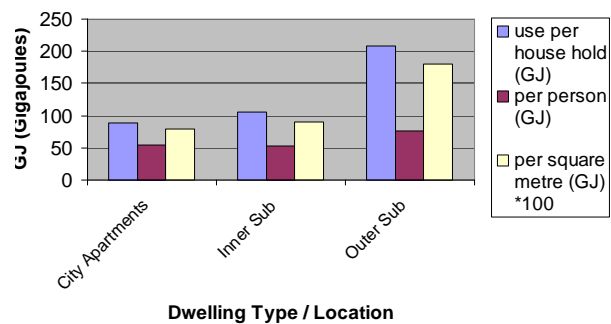


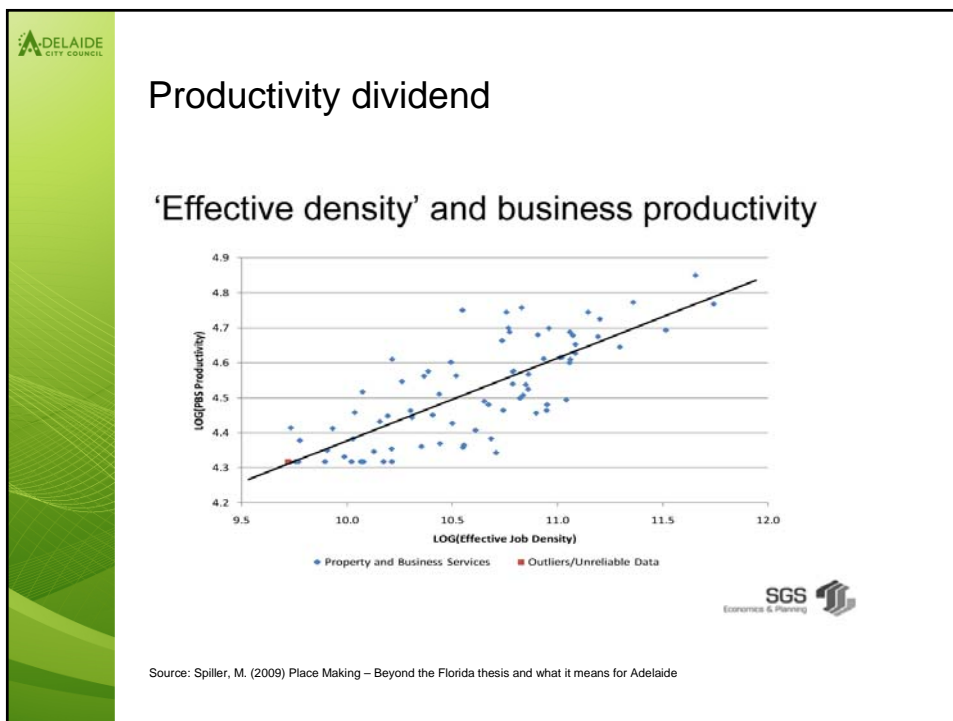
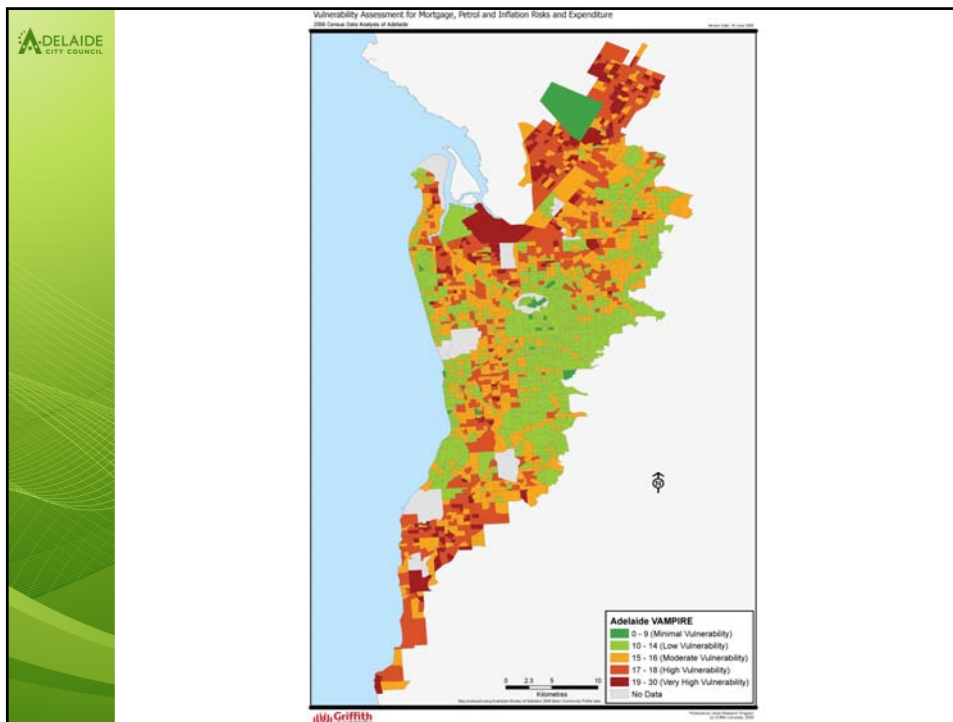
3. **Integrated Planning** (settlements for the future)

- Taking into account population growth, climate change, ecological, social and economic systems
- New focus on 'sustainability dividend' and 'productivity dividend'

Sustainability dividend

Life Cycle Transport & Housing Energy





Water Case Studies

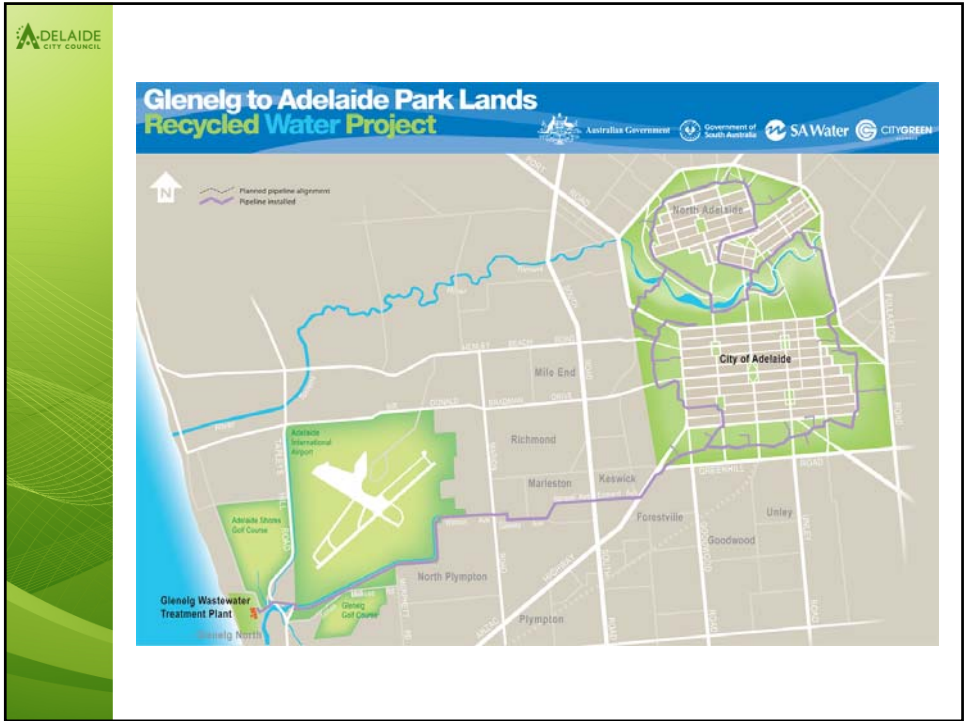
- 1. Environment: water quality and conservation**
 - Rainwater tanks mandatory legislation
 - Tank incentives



Water Case Study

- 2. Climate Change: water security**
 - Glenelg to Adelaide Pipeline





Water Case Study

3. Integrated Planning: Mawson Lakes

- Stormwater treatment and reuse
- Third pipe plumbing to dwellings

Energy Case Studies

1. Environment: Renewable energy

- Solar on buildings: Rundle UPark (car park) and Rundle Lantern
- Solar rebates
- Wind farms



Energy Case Studies

1. Environment: Renewable energy

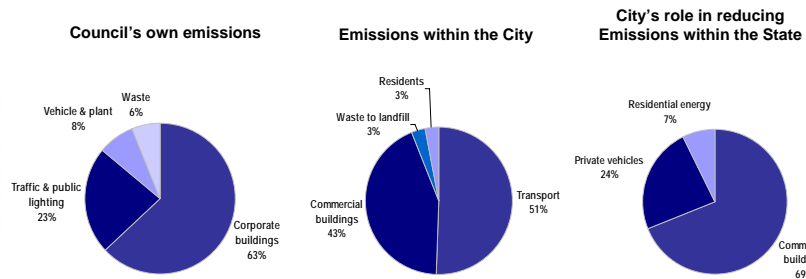
- Solar transport: Tindo, world's first solar electric bus



Energy Case Studies

2. Climate Change: Emissions reduction and energy efficiency

- Council's own building and operations
- Community
- State



Source: ICLEI Emissions Inventory, 2006

ADELAIDE CITY COUNCIL'S RESPONSE TO CLIMATE CHANGE – ENERGY + CO₂-e

FOCUS:	Council's own emissions	Emissions within the City	City's role in reducing emissions within the State
KEY EMITTERS / TARGETS			
STRATEGY/PLAN	<ul style="list-style-type: none"> • Carbon Neutral Action Plan 2008-2012 	<ul style="list-style-type: none"> • Environmental Sustainability Strategy 2009-2012 • Adelaide Sustainable City incentives scheme • Bicycle Action Plan 2008-2011 	<ul style="list-style-type: none"> • Creating our Future, the City of Adelaide Strategic Plan, 2008-2012 • Green City Sector Agreement • 30 Year Plan for Greater Adelaide
PROGRESS	<p>6000 tonnes CO₂ reduction initiatives to date</p> <ul style="list-style-type: none"> • 50% greenpower purchase • Solar panel installations • Car park lighting systems • Co-generation plant • Street & traffic lighting • Energy efficient IT • Energy management system 	<ul style="list-style-type: none"> • Rebates for installing solar panels • Electric vehicle infrastructure and charging stations at car parks • Bicycle Action Plan 2008-2011: <ul style="list-style-type: none"> - 21 kms of new bike lane - 90 new bike racks - Free City Bikes (3000 hires over 3 months) - Tour de Work workplace cycling challenge 	<ul style="list-style-type: none"> • CitySwitch program for tenants in commercial buildings • Small business advice

Energy Case Studies

2. **Climate Change: Emissions reduction and energy efficiency**

- New electric car charging stations pilot at Council car park
- The station will provide free green power to two cars at once
- Participating in research to determine infrastructure required to support electric vehicles

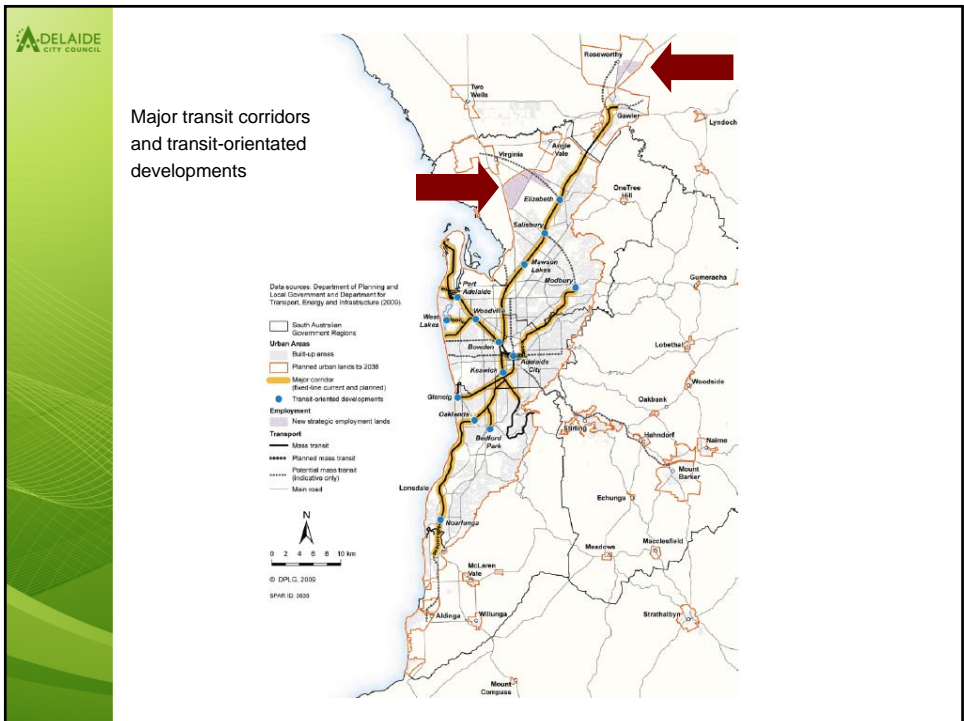
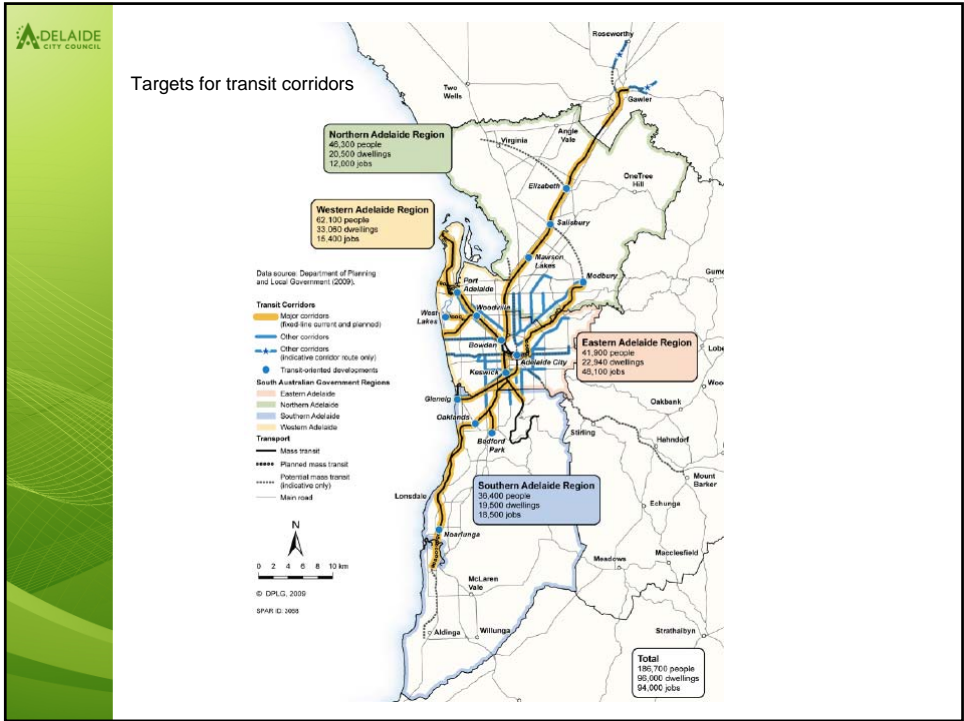


Energy Case Studies

3. **Integrated Planning: Transit Oriented Developments**

- Mixed use developments, denser, transport integrated (walking, cycling, mass transit)
- well designed and liveable
- adapted to climate change







Partners

State Government

- Departments for Climate Change; Planning & Local Government; Transport, Energy & Infrastructure
- Adelaide Green City Sector Agreement
- Integrated Design Strategy & Commission



Partners

Federal Government

- Policy position on strategic framework for cities
 - Population growth, climate change (transport, infrastructure, innovation and affordable housing)
- Significant funder
- Adelaide Solar City Program (Council installations and community incentives)
- Emissions Trading Scheme?



Partners

Business

- City Switch and Green Buildings
- Sustainability 1000
- Building Innovation Fund



Partners

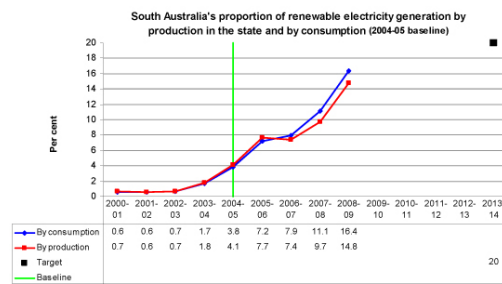
Residents

- Biggest benefit will come from Emissions Trading Scheme
- Pilot Project - Sustainability Street
- Audit kits from libraries
- Adelaide Sustainable City Incentives Scheme (solar and rainwater tank rebates)



Reporting and Scorecards

- City and Council scorecards
 - Reduce carbon emissions from Council's own operations by 60% by 2012
 - Reduce Council's mains water use by 60% by 2012
- Enterprise Energy Management System
 - will track emissions and in future water
- South Australian Strategic Plan



Conclusion

1. Choose your focus
(environment? climate change? integrated planning?)
2. Find the 'willing partners' that align with where you want to go.
Initiate the dialogue
3. Don't wait for the comprehensive plan. Establish your guiding
framework and commence relevant projects. The plan will catch up
4. Be prepared to experiment by doing
5. Receive quality feedback and reshape